



Neuadd y Sir  
Y Rhadyr  
Brynbuga  
NP15 1GA

Dydd Mercher, 20 Ebrill 2016

# Hysbysiad o Adroddiadau a Dderbyniwyd yn dilyn Cyhoeddi'r Agenda

## Pwyllgor Craffu Cymunedau Cryf

Dydd Iau, 28ain Ebrill, 2016 at 10.00 am,  
Neuadd Y Sir, Y Rhadyr, Brynbuga, NP15 1GA

Ynghlwm adroddiadau y bydd y pwyllgor yn ystyried fel rhan o'r agenda gwreiddiol ond cawsant eu cyflwyno i wasanaethau democrataidd yn dilyn cyhoeddi'r rhaglen.

Eitem Ddim	Eitem	Tudallennau
4.	Craffu Partneriaethau: Ystyried yr Ymarferiad Mapio Partneriaeth a'r ystod gwasanaethau a ddarperir gan bartneriaid sy'n derbyn cyllid grant (I ddilyn).	1 - 8

**Paul Matthews**  
Prif Weithredwr

This page is intentionally left blank

<b>SUBJECT:</b>	<b>Review the Third Sector Contribution to the Partnership Landscape in Monmouthshire.</b>
<b>MEETING:</b>	<b>Strong Communities Select Committee</b>
<b>DATE:</b>	<b>28<sup>th</sup> April 2016</b>

**1. PURPOSE:**

- 1.1 To provide relevant partnership information to the Strong Communities Select Committee in relation to the contribution of third sector organisations.
- 1.2 To focus on the representation, activity and delivery of third sector partners across the partnership landscape within Monmouthshire, under the direction of the Monmouthshire Public Service Board (formally Local Service Board).
- 1.3 To have an oversight of the funding provided to third sector partners.

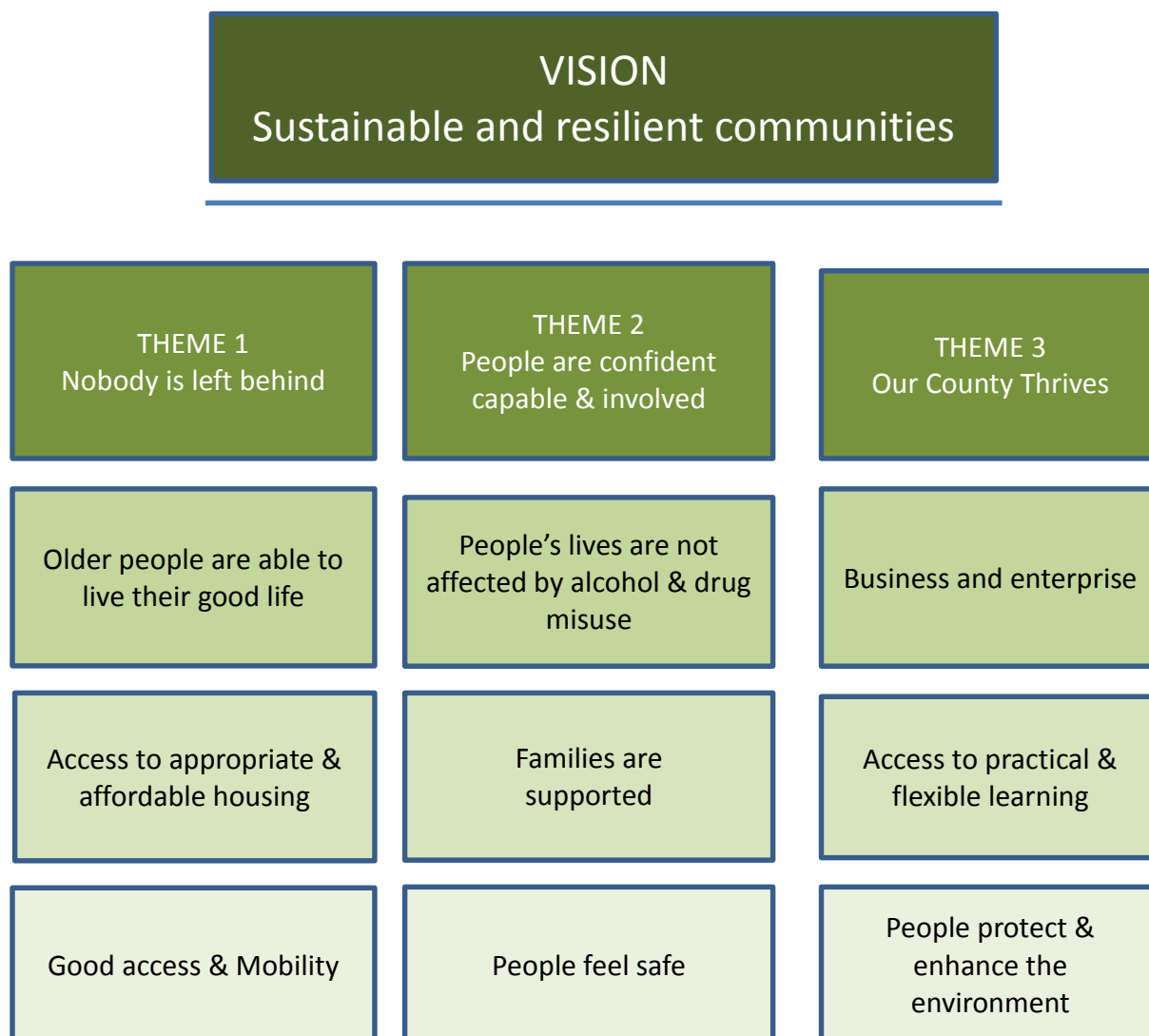
**2. RECOMMENDATIONS:**

- 2.1 That the Select Committee have oversight of the partnership structure and landscape which contributes to the delivery of the Monmouthshire Single Integrated Plan, under the direction of the Public Service Board.
- 2.2 That the Select Committee review the role of the third sector and how they contribute to the Monmouthshire Single Integrated Plan.
- 2.3 That the Select Committee review with a critical eye, the representation, spread and scope of third sector organisations across the Monmouthshire partnership landscape and how well represented they are currently under the Public Service Board.
- 2.4 The Select Committee review and have a clear oversight of the funding arrangements allocated by Monmouthshire County Council to third sector organisations.

**3. REASONS:**

- 3.1 In 2012, the Welsh Government Statutory Guidance “Shared Purpose, Shared Delivery” rationalised the partnership landscape, by reducing complexity and duplication, and freeing up resources, through the development of Local Service Boards and the Single Integrated Plan. In April 2016, the Wellbeing of Future Generations Act came into force and the Monmouthshire Local Service Board

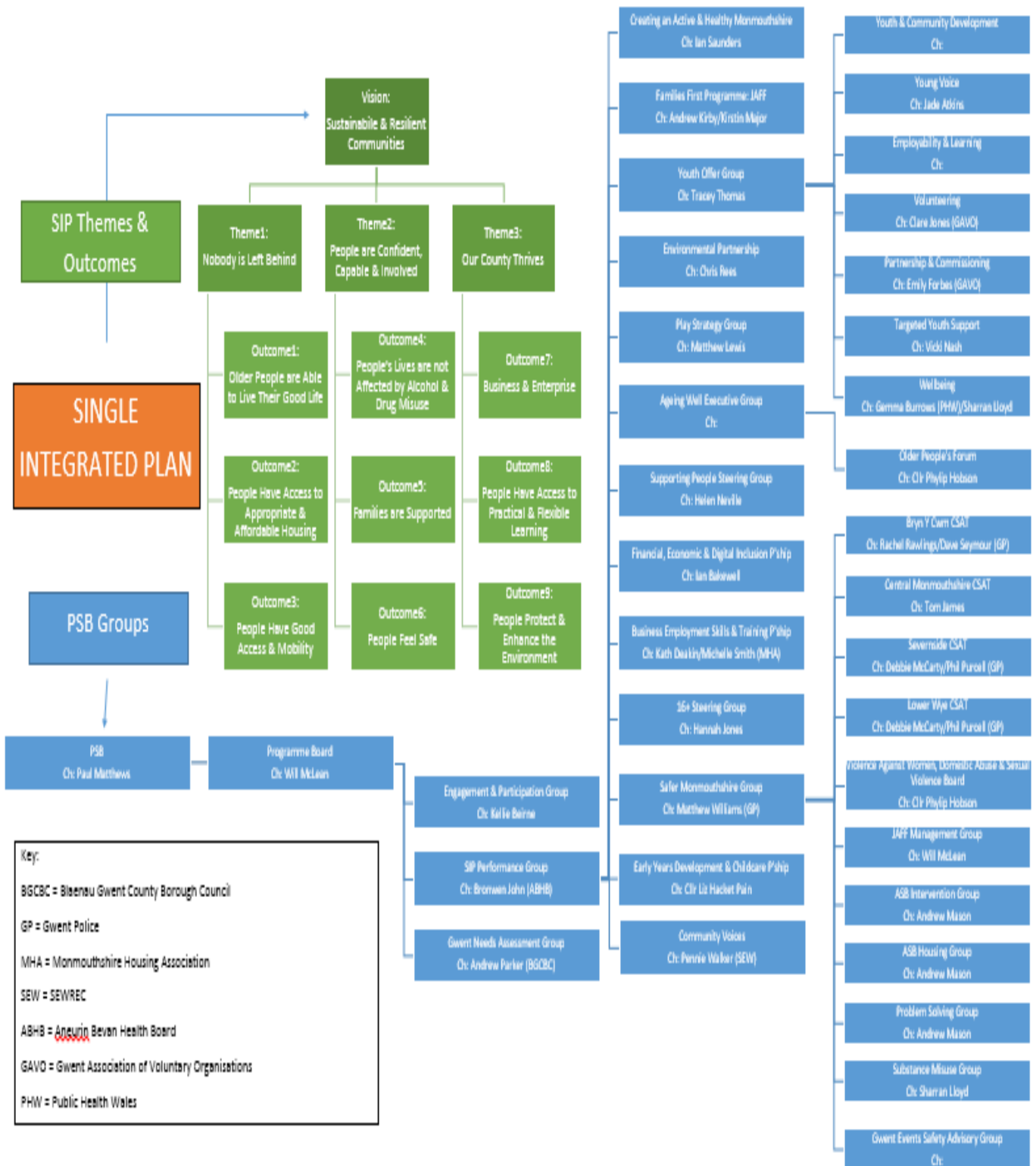
transitioned into a statutory Public Service Board with the responsibility of overseeing the remaining year of the Single Integrated Plan, which runs until March 2017.



*Image 1: Monmouthshire Single Integrated Plan outcomes 2013-17*

**3.2** Following the audit and review of the partnership landscape in 2014/15, the Strategic Partnership team concentrated on shaping the partnership landscape into a structure that was accessible to all partners. Strategic partnership groups were mapped and reviewed and this enabled us to understand the complexities of partnership arrangements, the robustness of partnership governance and how they were contributing to improving population outcomes identified in the SIP for Monmouthshire and reporting into the Public Service Board. **(Appendix A)**

Image 2: PSB & Partnership Landscape



**3.3** The Partnership landscape in Monmouthshire fully embraces multi-agency working, with representation from a wide range of partner organisations, including the third sector, who work collaboratively to improve the outcomes for Monmouthshire residents. Collaboration and partnership working forms a key part of the delivery mechanism across the county, and it is important that the Select Committee have a solid oversight of this work and the contribution of our third sector partners in this wide and varied landscape. **(Appendix B)**

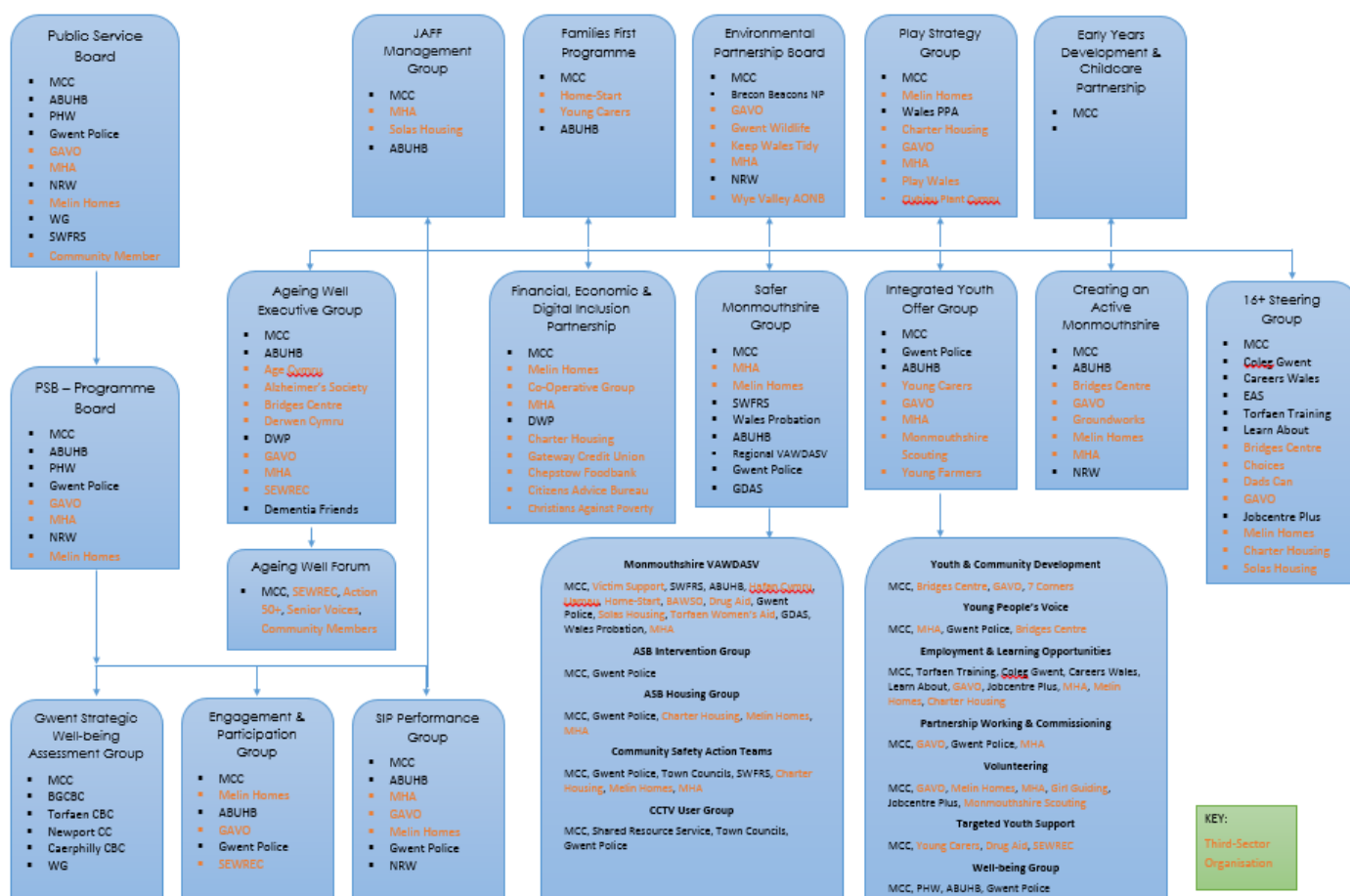


Image 3: Partnership group membership, with third sector organisations highlighted

**3.4** Funding is awarded to some of our third sector partners, who contribute towards the outcomes of the Monmouthshire Single Integrated Plan. This funding is as follows:

Organisation	Project	Amount 2016/17
GAVO	Third Sector Compact	£12,000
Citizens Advice Bureau	Advice Service	£57,105
Home Start	Families Programme	First £31,000
Crossroads, Carers	Young Families Programme	First £50,486
<b>Total</b>		<b>£150,591</b>

**4. RESOURCE IMPLICATIONS:**

The Strategic Partnership team, currently manage the partnership landscape and the relationships with the partners under the Public Service Board.

**5. SUSTAINABLE DEVELOPMENT AND EQUALITY IMPLICATIONS:**

There are no implications at this review stage.

**6. Appendices:**

- Appendix A: Monmouthshire Public Service Board Partnership Landscape
- Appendix B: Partnership groups membership: with third sector organisations highlighted

**7. BACKGROUND PAPERS:**

- Monmouthshire Single Integrated Plan 2013 -17

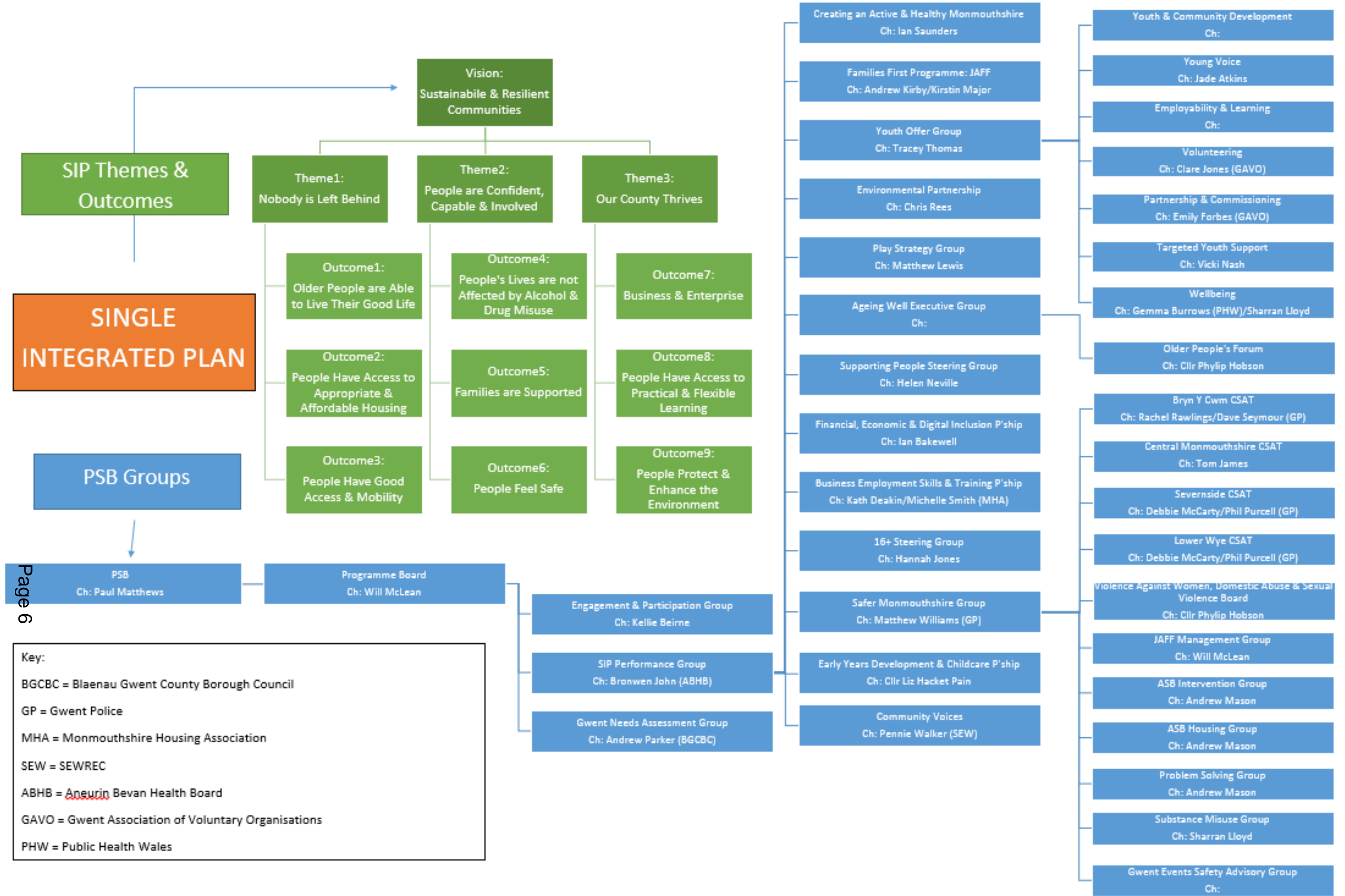
**8. AUTHORS:**

Sharran Lloyd, LSB/PSB Development Manager

**9. CONTACT DETAILS:**

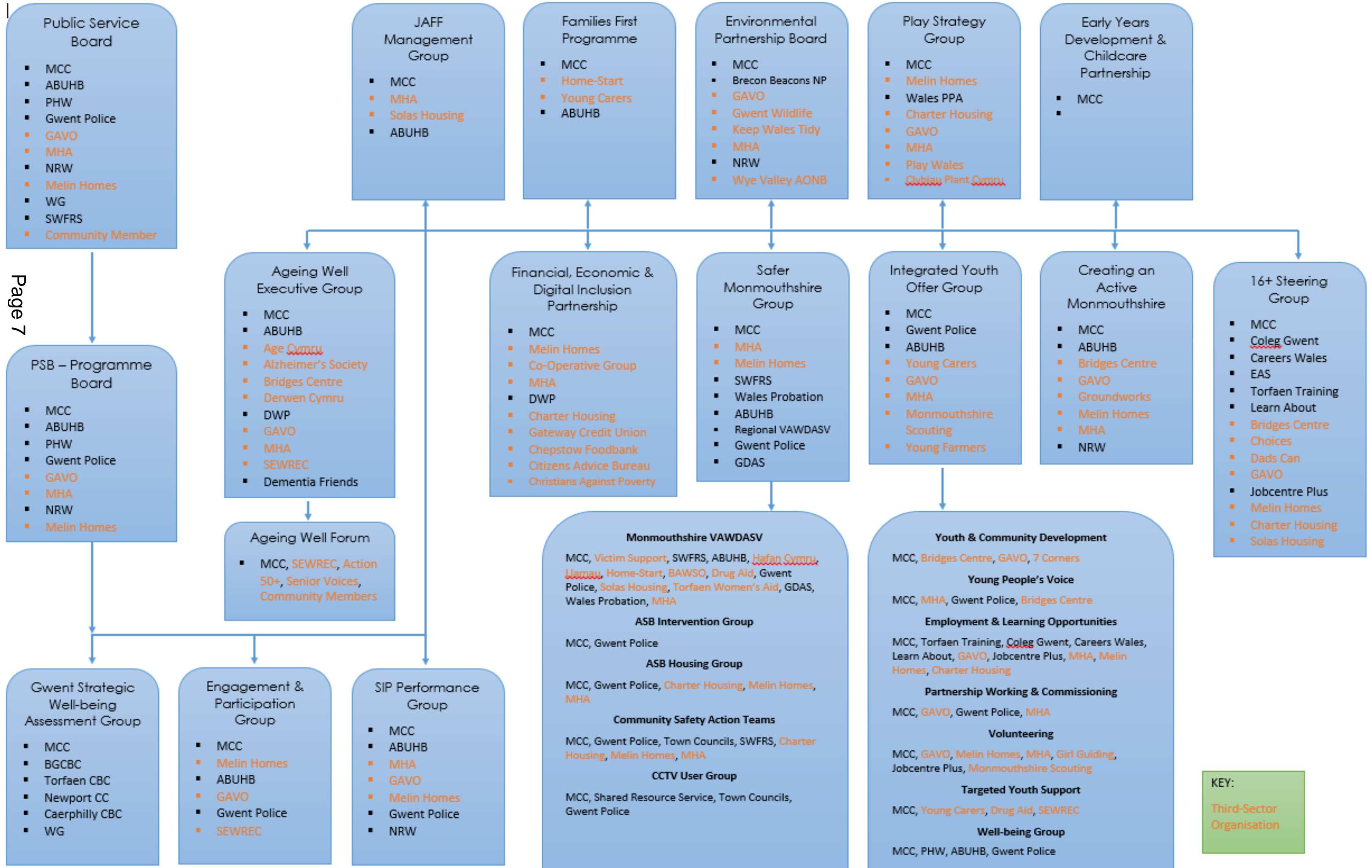
Tel: 01633 64 (4344)

E-mail: [Sharranlloyd@Monmouthshire.gov.uk](mailto:Sharranlloyd@Monmouthshire.gov.uk)



**Key:**  
 BGCBC = Blaenau Gwent County Borough Council  
 GP = Gwent Police  
 MHA = Monmouthshire Housing Association  
 SEW = SEWREC  
 ABHB = Aneurin Bevan Health Board  
 GAVO = Gwent Association of Voluntary Organisations  
 PHW = Public Health Wales





This page is intentionally left blank